

MRMCC CHAIR'S REPORT

- **Recreational Alligator Harvest**
- **Wellen Park Village H**
- **PRMRWSA**
- **Land Protection Efforts**
- **Cope Shoreline**

Jono Miller April 17. 2026

RECREATIONAL ALLIGATOR
HARVEST
ON THE MYAKKA RIVER

I called Dwayne Carbonneau, Assistant Alligator Management Program Coordinator, and based on previous discussions at MRMCC, told him the Council wanted to understand the what would be involved in getting FWC to prohibit the recreational take of alligators in Myakka River in Sarasota County for the following reasons:

- The Myakka is a known gator viewing location
- Alligators =resource value of the W&S River
- People are poaching alligators in the park
- We now have crocodiles in the river

**The Myakka River is
famous for its alligators**

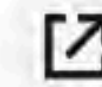
The Palm Beach Post

Most alligator-infested rivers in Florida: Here's a list of the top 5 most gator-filled

Lianna Norman and Jennifer Sangalang, USA TODAY NETWORK - Florida

Wed, July 30, 2025 at 1:25 PM EDT

6 min read



33

5. **Myakka River:** The Myakka River is a state-designated wild and scenic river, estimated to have more than 230 alligators living in it. Some reports say the river is around 68 miles long, while others say it's closer to 72 miles long. The river starts near the Manatee-Hardee county line and empties out into the Gulf of America (previously Gulf of Mexico) through the Charlotte Harbor.

BEST PLACES TO SEE ALLIGATORS IN FLORIDA

By [Mike Miller](#) Updated July 30, 2025

This beautiful 37,000 acre park is in Sarasota County and Manatee County.

No one knows for sure how many alligators call this park home, but at least 120 have been counted at one time on one viewing.

There is a place on the lower lake called Deep Hole where an amazing number of alligators like to congregate. It sometimes look like a gator family reunion.

It requires a special permit to visit Deep Hole that you have to obtain at the ranger station.

13208 State Rad 72
Sarasota, FL 34241
Tel: 941-361-6511



Myakka River State Park, Alligators in Deep Hole

Myakka River State Park, Alligators in Deep Hole

**Alligators are a resource
value of the State
Wild & Scenic River**

Section 258.501 Myakka River; wild and scenic segment.

(1) SHORT TITLE.--This section may be cited as the "Myakka River Wild and Scenic Designation and Preservation Act.

(h) "Resource value" means any one or more of the specific economic, scenic, recreational, geologic, fish and wildlife, historic, cultural, or ecological features associated with the river area as determined by the coordinating council.

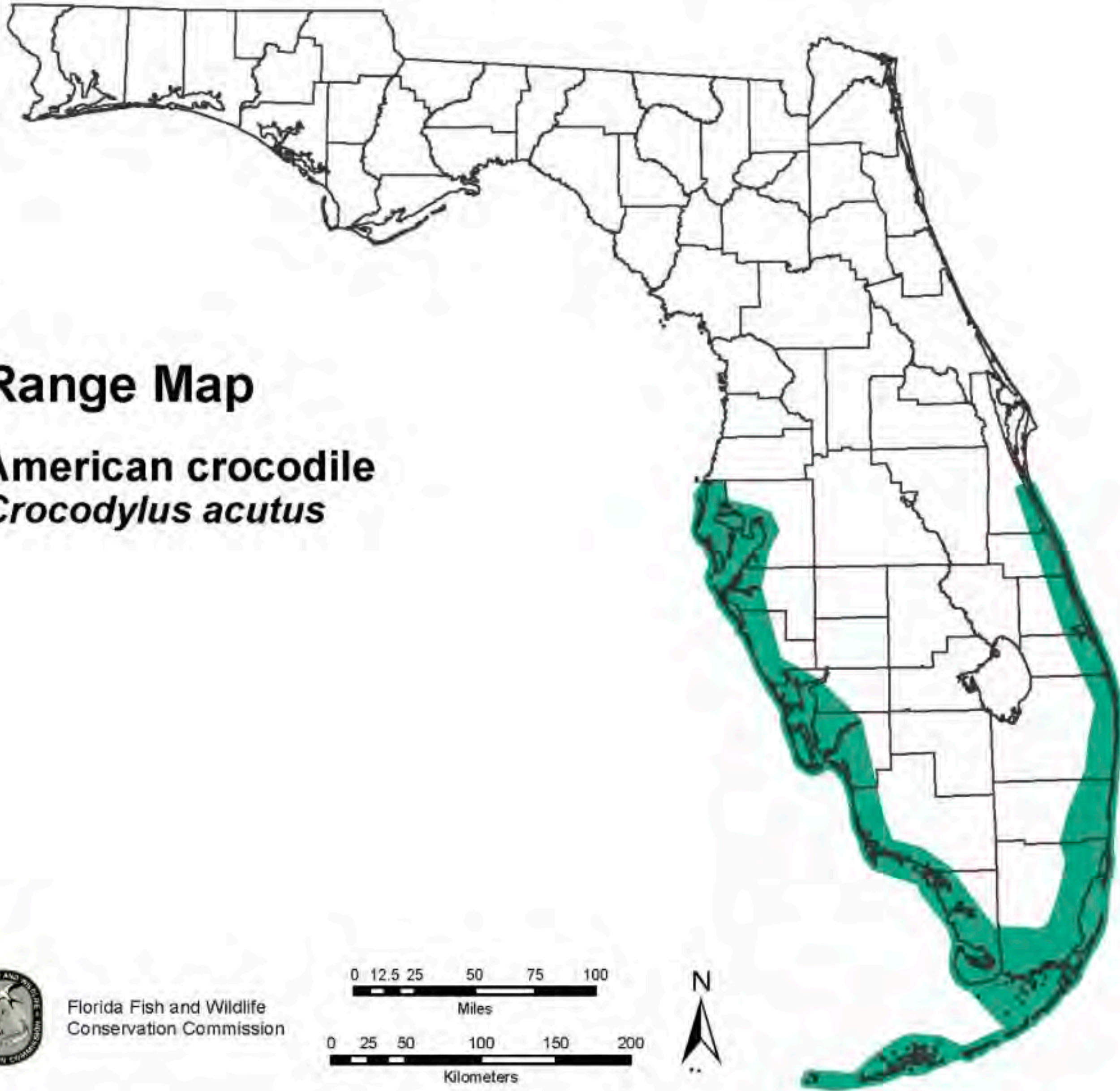
- 1. "Resource value" means any one or more of the specific economic, scenic, recreational, geologic, fish and wildlife, historic, cultural, or ecological features associated with the river area as determined by the Coordinating Council and as set forth in the Myakka Wild and Scenic River Management Plan.

**People are poaching
Alligators in Myakka
River State Park !**

2019	SARASOTA COUNTY 6 ft. 11 in.	10/10/2019	
2019	SARASOTA COUNTY 6 ft. 0 in.	10/08/2019	
2019	SARASOTA COUNTY 12 ft. 2 in.	10/26/2019	COW PEN SLOUGH
2019	SARASOTA COUNTY 11 ft. 2 in.	09/29/2019	LOWER MYAKKA LAKE
2019	SARASOTA COUNTY 10 ft. 8 in.	10/05/2019	LOWER MYAKKA LAKE
2020	SARASOTA COUNTY 9 ft. 8 in.	10/17/2020	VENICE INLET
2020	SARASOTA COUNTY 8 ft. 6 in.	08/27/2020	

2022	SARASOTA COUNTY 8 ft. 2 in.	09/20/2022	HATCHETT CREEK
2022	SARASOTA COUNTY 7 ft. 4 in.	08/22/2022	BIG SLOUGH
2022	SARASOTA COUNTY 7 ft. 10 in.	12/14/2022	CURRY CREEK
2022	SARASOTA COUNTY 6 ft. 5 in.	08/16/2022	LOWER MYAKKA LAKE
2022	SARASOTA COUNTY 10 ft. 1 in.	12/14/2022	LOWER MYAKKA LAKE

**We now have crocodiles
In the Myakka River**

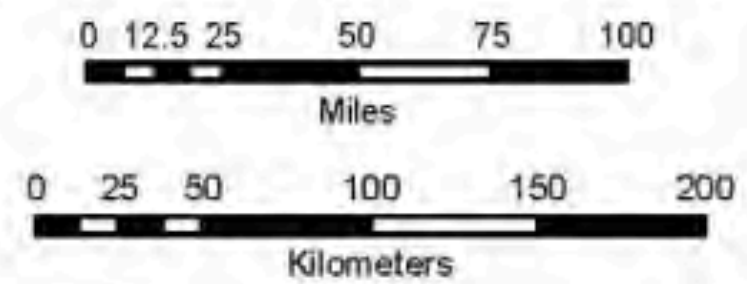


Range Map

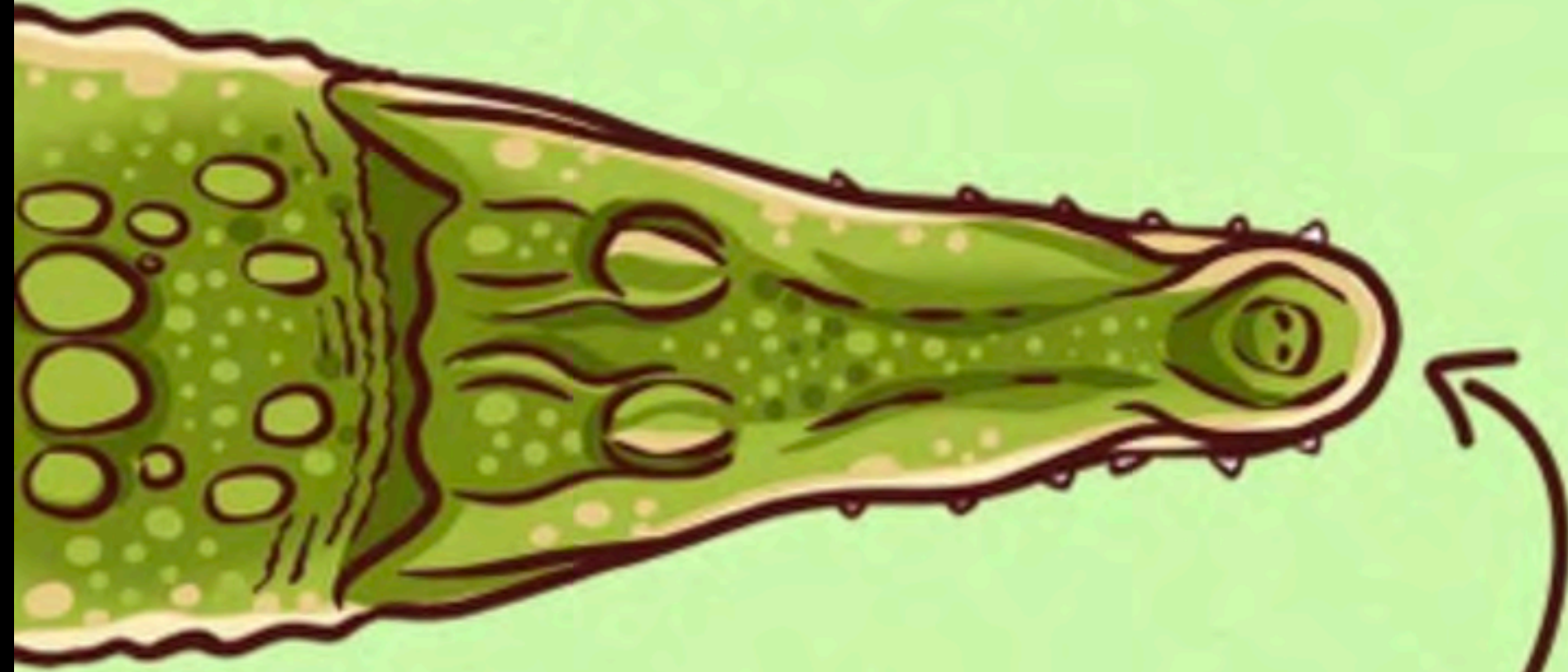
American crocodile
Crocodylus acutus



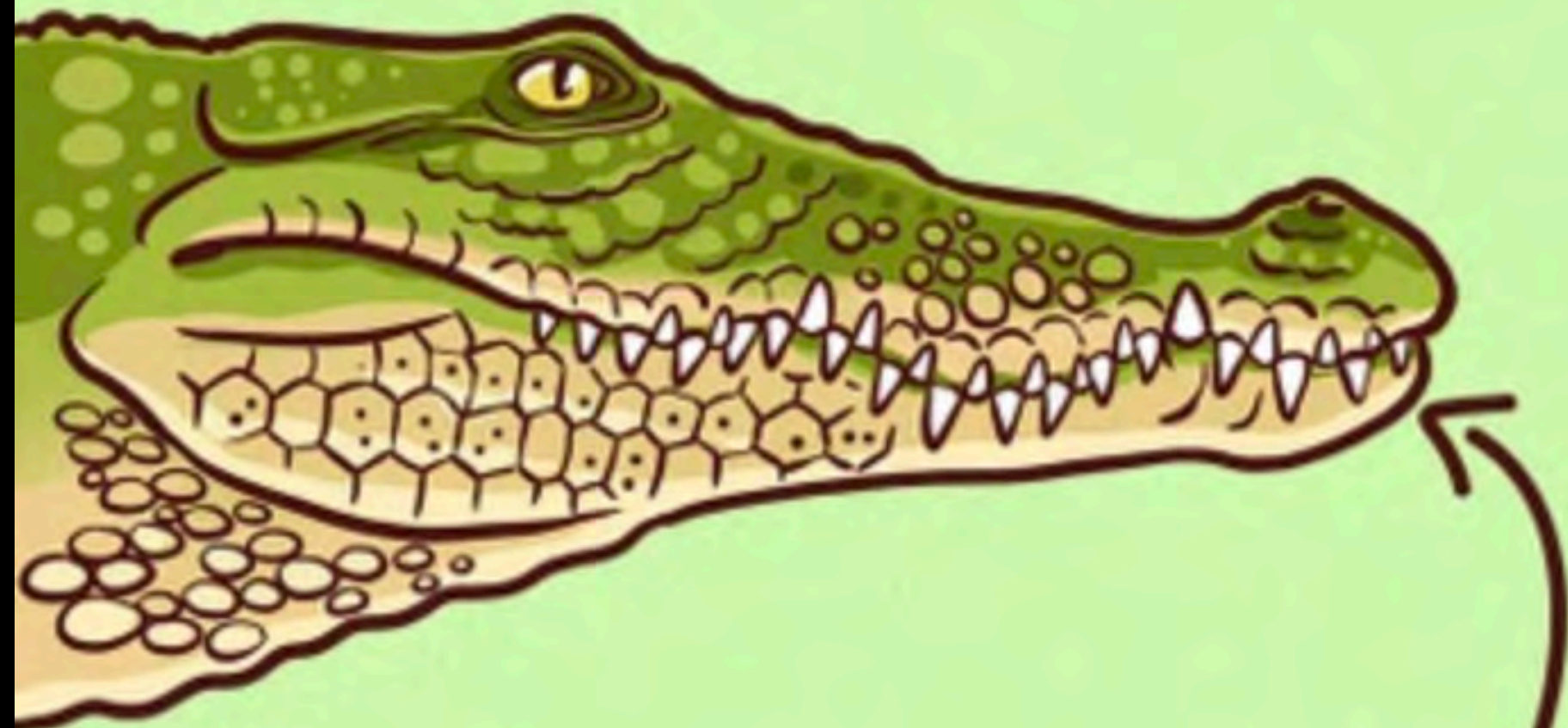
Florida Fish and Wildlife
Conservation Commission



A CROCODILE

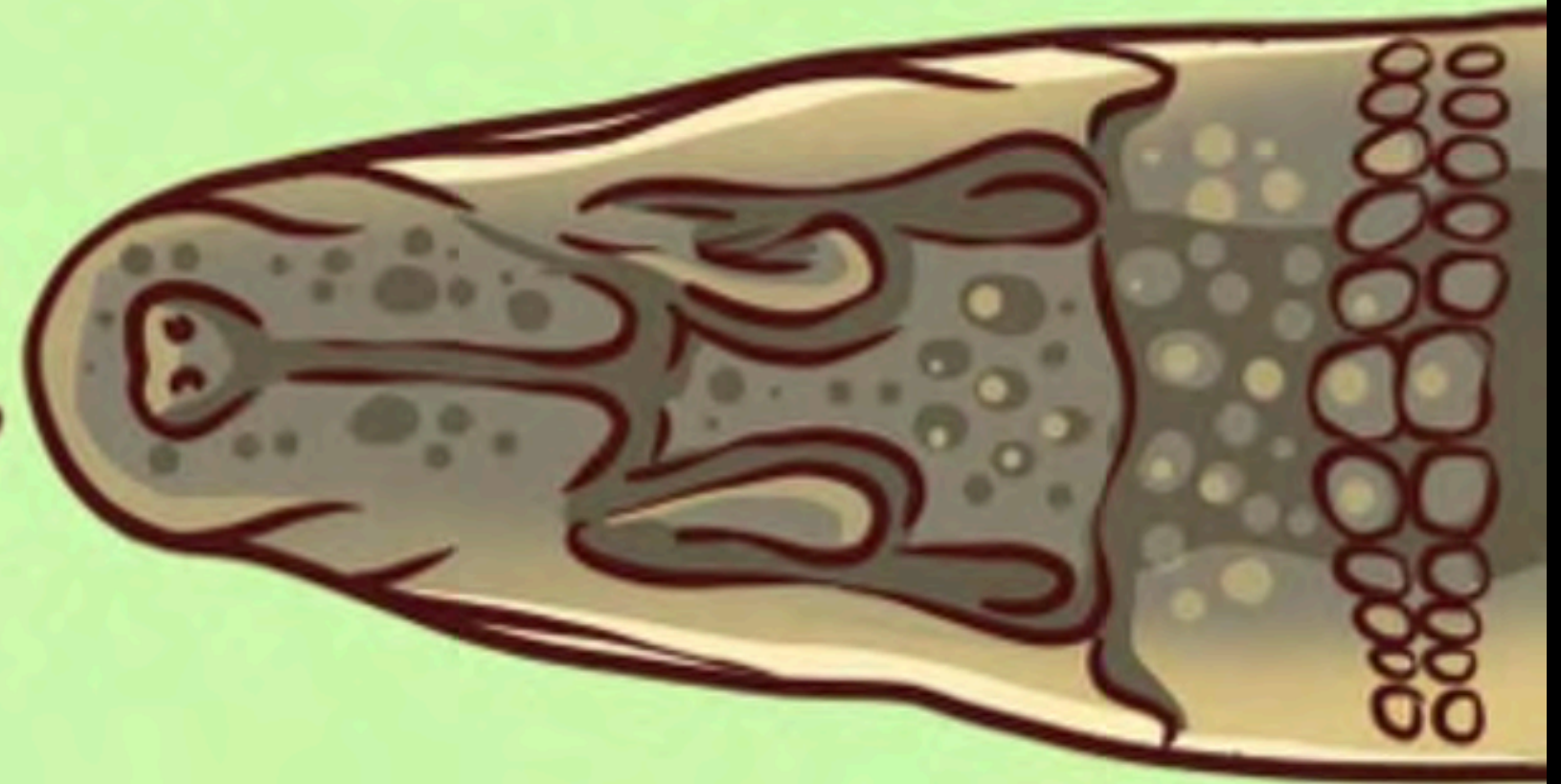


V-shaped snout



Lower teeth are visible

AN ALLIGATOR



U-shaped snout



Lower teeth are hidden



Sees you later

In a while







~~ALLIGATORS~~

CROCODILE!



American Crocodile Photo taken "near Border Road" on the Myakka River
Photo taken 2021. Photographer unknown at this time.

~~ALLIGATORS~~

CROCODILE!

American Crocodile in the Myakka River in Charlotte County.



Biologists with the Florida Fish and Wildlife Conservation Commission were surprised to find

Credit: ReAnna Montwheler, Florida Fish & Wildlife Conservation Commission



**FOR THE PERIOD 2015>2024
(10 YEARS)**

**81 ALLIGATORS TAKEN
In Sarasota County**

His assumption was virtually all In the Myakka River

Mr. Carbonneau:

It was very helpful to talk with you last week. I understand your concern that eliminating the Myakka River from recreational alligator harvest would virtually eliminate recreational take in Sarasota County.

But when I reviewed data available online from 2008 through 2022, here's what I found:

The most common location listed in Sarasota County was blank. I'm puzzled how FWC can pursue data-based management, if you don't know where alligators are being harvested. There were 35 instances of people failing to record where their alligator was taken.

The second most common location was Curry Creek with 17.

Myakka River was third with 12. (That's not counting the four taken in Lower Myakka Lake, which is inside Myakka River State Park).

One form said private, one was a country club, but the rest seemed to be public waters, such as Shakett Creek (1), Blackburn Canal (2) **Deer Prairie Creek (5) [This may be inside a County Preserve]** , Big Slough (3) , Venice Inlet (1), Hatchett Creek (1).

To summarize There were 16 instances (at least four illegal) of harvest in the State Park, compared with 37 from other named locations. And then there's the ambiguous 35. Based on the available data, it looks like a little more than a quarter were taken in the Myakka (27%).

So, while eliminating the Myakka would be a reduction, it would not mean the end of recreational harvest in Sarasota County.

Can you provide me with the **alligator management objectives** for Sarasota County (and/or the Myakka River)? I'm curious to understand how the designation of the Myakka in Sarasota County as the first state-designated Wild and Scenic River factors into your management goals.

Mr. Carbonneau: The Myakka River Management Coordinating Council is meeting this Friday and I would like to be able to tell the Council members something about the alligator management objectives for the Myakka River in Sarasota County. Can you forward what you have on that topic?

To be continued.....

Whereas, The Myakka River in Sarasota County is a widely publicized alligator viewing location that depends on having alligators to view,

And, whereas alligators are resource value of the Wild and Scenic section of the Myakka River,

And whereas to pursuant *62D-15.005 (9) Engaging in any other activity or practice which adversely impacts resource values in the river area, and for which no permit has been obtained under Rule 62D-15.006, F.A.C.* is a prohibited activity; and no permit has been issued for recreational harvest,

And, whereas FWC has documented poaching alligators in Myakka River State Park,

And, whereas crocodiles are now being sighted in the Myakka River,

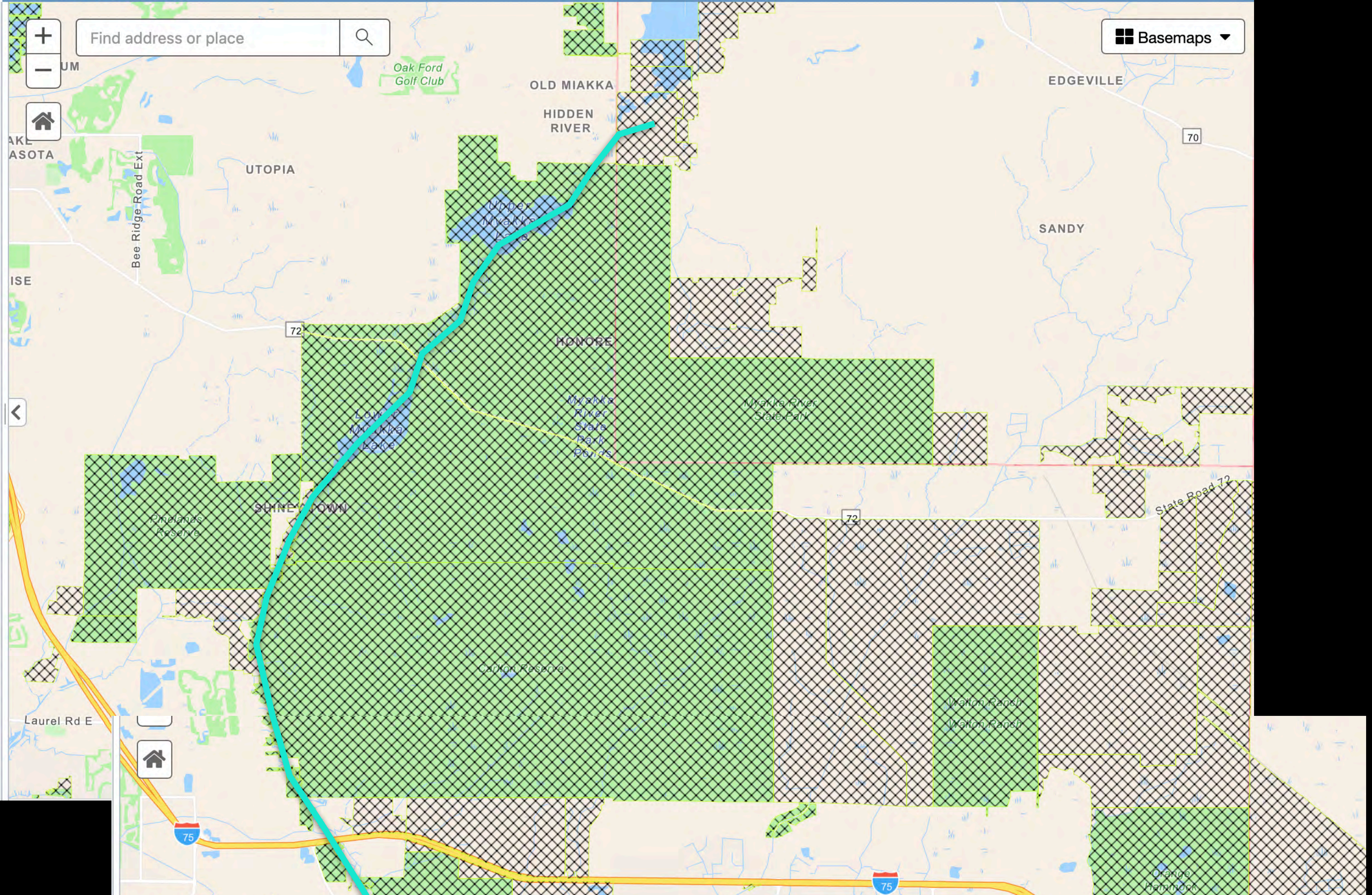
And, whereas crocodiles can be confused with alligators,

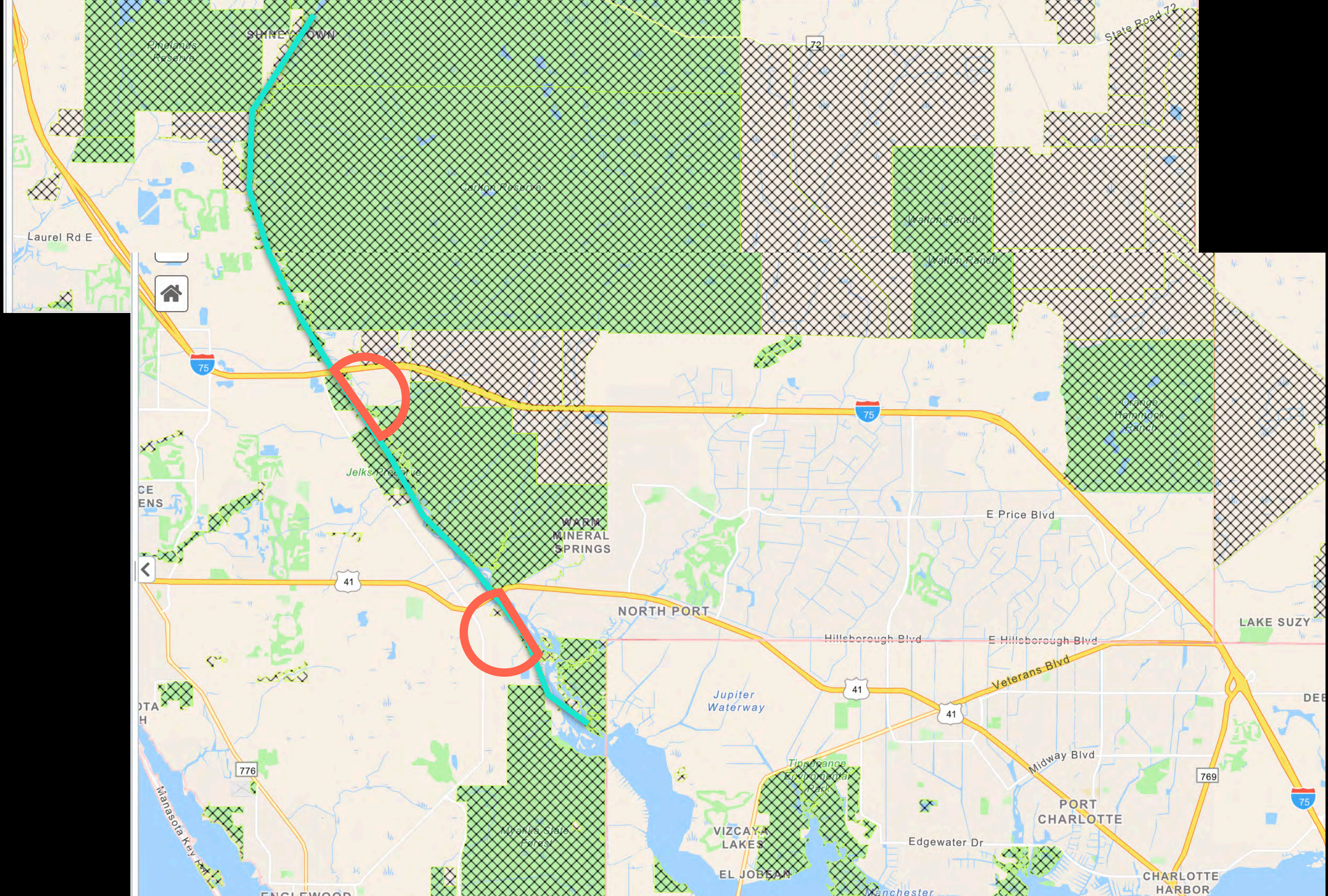
And, whereas crocodiles are designated a Threatened species with no legal recreational take,

And whereas the Assistant Alligator Management Program Coordinator declined to respond to two requests to clarify how the Myakka's Wild and Scenic status affects FWC's alligator management objectives for the River,

Therefore the Myakka River Management Coordinating Council is petitioning the Florida Wildlife Commission to remove the Wild and Scenic section of the Myakka River in Sarasota County from future recreational harvests.

WELLEN PARK
VILLAGE H







Nokomis

Venice

Venice

Gardens

Plantation

Deer Prairie Creek

South Venice

North Port

West Villages

Murdock

Englewood

El Jobean

Port C



U.S. 41 /
TAMIAAMI TRAIL

HOSPITAL

STATE COLLEGE
OF
FLORIDA

VILLAGE 'E'

DIocese
OF VENICE

VILLAGE 'H'

RIVER ROAD
OFFICE PARK
(ACTIVITY
CENTER #8)

VILLAGE 'D'

VILLAGE 'F'

VILLAGE 'G'

DAGEDALL
SPRING
TRAINING

D-0
D-1b
D-1a
D-6
D-2

D-5

G-4

F-2

F-3

G-1

G-2

22
23
24

14

26
27

15

04

02
03

28

29

04

COMMO
CAVE
PORTICO
AVE.

PRETO
BLVD
PI AYMORE
RD

ROAD
SEGMENT 25

C
M
P
U
P

C

C

C

C

C

C

C

C

C

C

C

C

C

C

C

C

C

C

C

C

C

C

C

C

C

C

C

C

C

C

C

C

C

C

C

C

C

C

C

C

C

C

C

C

C

C

C

C

C

C

C

C

C

C

C

C

C

C

C

C

C

C

C

C

C

C

C

C

C

C

C

C

C

C

C

C

C

C

C

C

C

C

C

C

C

C

C

C

C

C

C

C

C

C

C

C

C

C

C

C

C

C

C

C

C

C

C

C

C

C

C

C

C

C

C

C

C

C

C

C

C

C

C

C

C

C

C

C

C

C

C

C

C

C

C

C

C

C

C

C

C

C

C

C

C

C

C

C

C

C

C

C

C

C

C

C

C

C

C

C

C

C

C

C

C

C

C

C

C

C

C

C

C

C

C

C

C

C

C

C

C

C

C

C

C

C

C

C

C

C

C

C

C

C

C

C

C

C

C

C

C

C

C

C

C

C

C

C

C

C

C

C

C

C

C

C

C

C

C

C

C

C

C

C

C

C

C

C

C

C

C

C

C

C

C

C

C

C

C

C

C

C

C

C

C

C

C

C

C

C

C

C

C

C

C

C

C

C

C

C

C

C

C

C

C

C

C

C

C

C

C

C

C

C

C

C

C

C

C

C

C

C

C

C

C

C

C

C

C

C

C

C

C

C

C

C

C

C

C

C

C

C

C

C

C

C

C

C

C

C

C

C

C

C

C

C

C

C

C

C

C

C

C

C

C

C

C

C

C

C

C

C

C

C

C

C

C

C

C

C

C

C

C

C

C

C

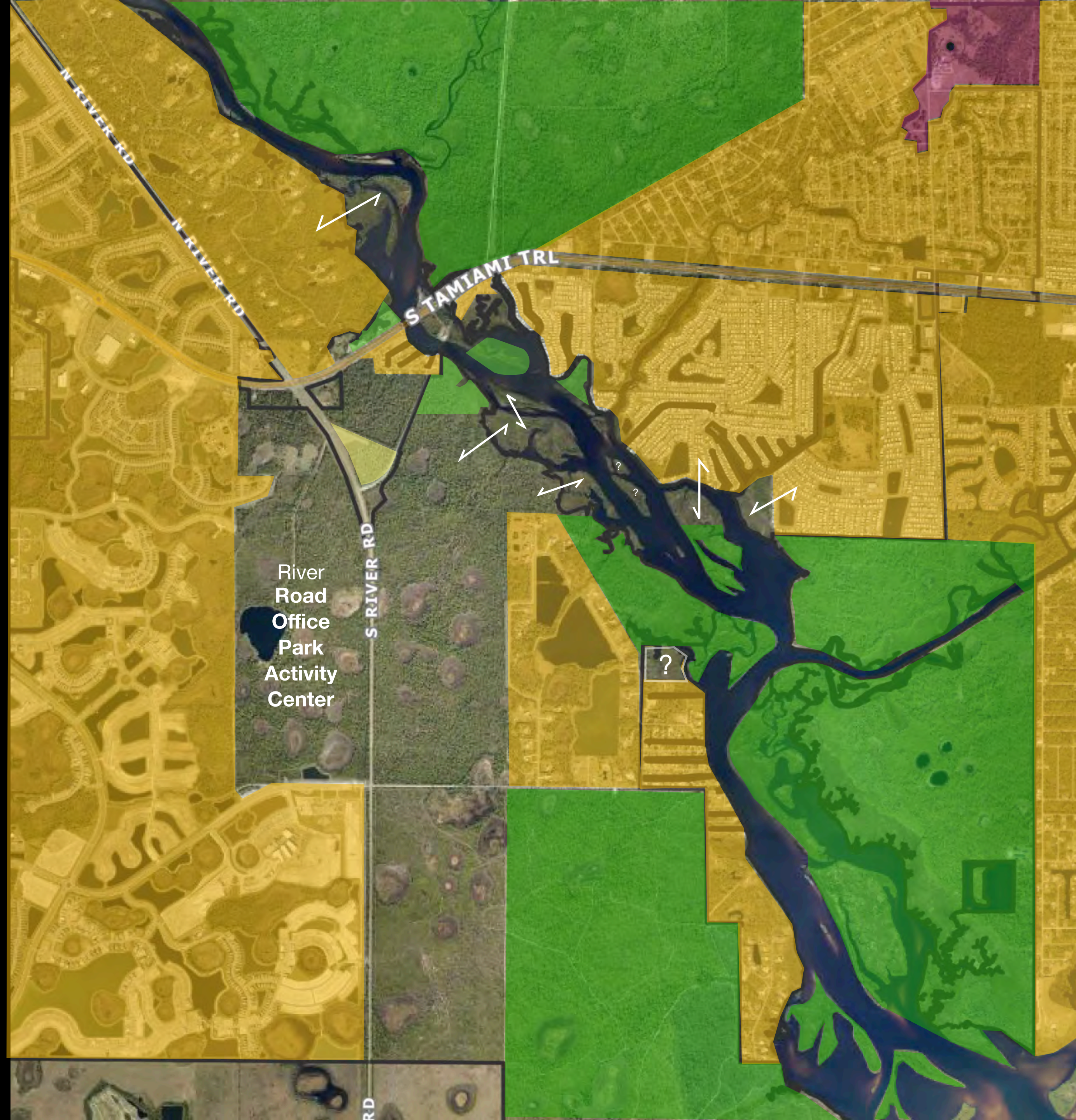
C

C

C

C

C



N RIVER RD
N RIVER RD

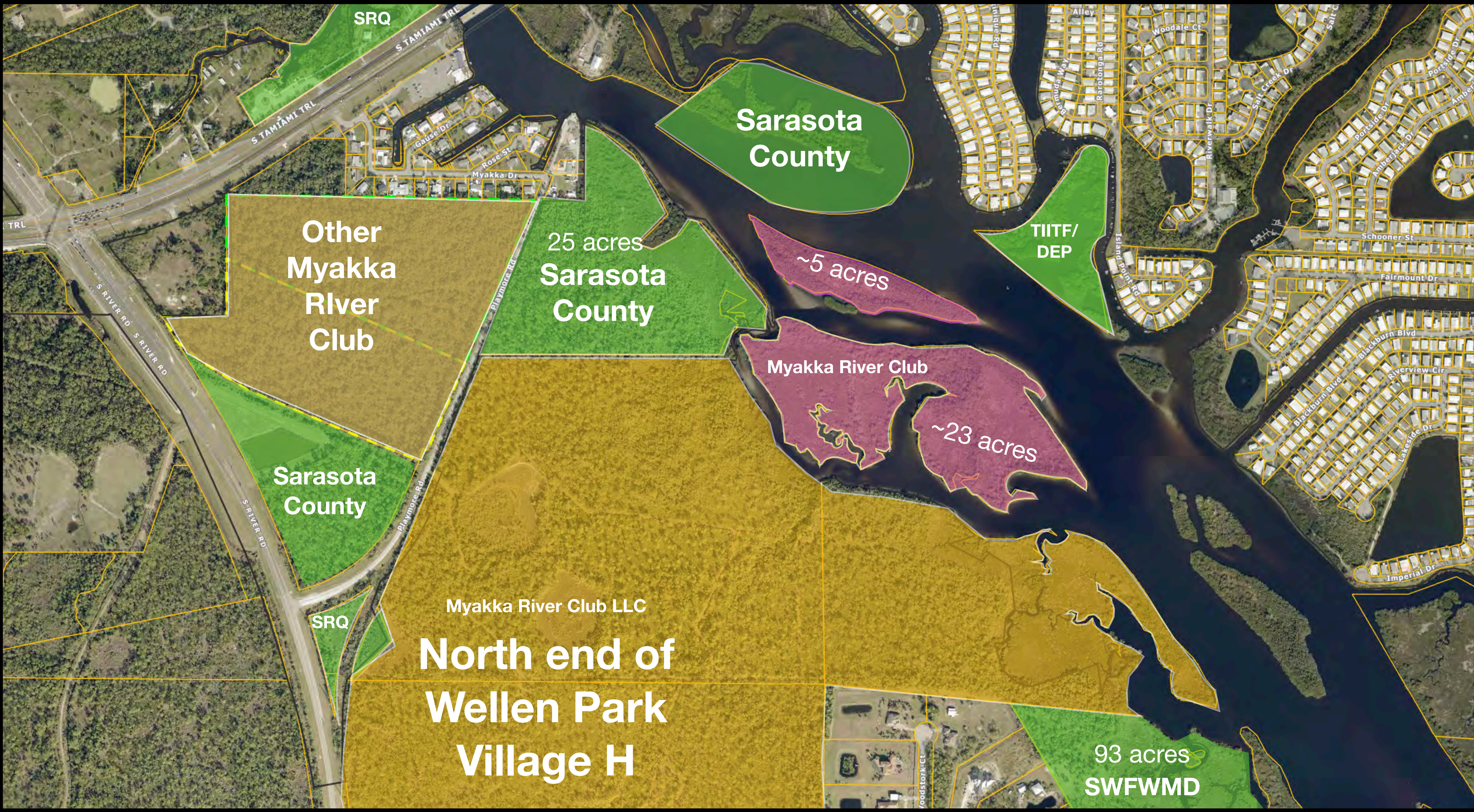
S TAMiami TRl

S RIVER RD

River Road
Office
Park
Activity
Center

?

RD



SRQ

Sarasota
County

TIITF/
DEP

Other
Myakka
River
Club

25 acres
Sarasota
County

~5 acres

Myakka River Club

~23 acres

Sarasota
County

Myakka River Club LLC

North end of
Wellen Park
Village H

SRQ

93 acres
SWFWMD



FUTURE

PRESERVED WETLANDS

MYAKKA RIVER PROTECTION ZONE



150' SETBACK AREA
(ULDC FIGURE 6.6.3.1)

50' MYAKKA RIVER AREA BUFFER
(ULDC FIGURE 6.6.3.1)

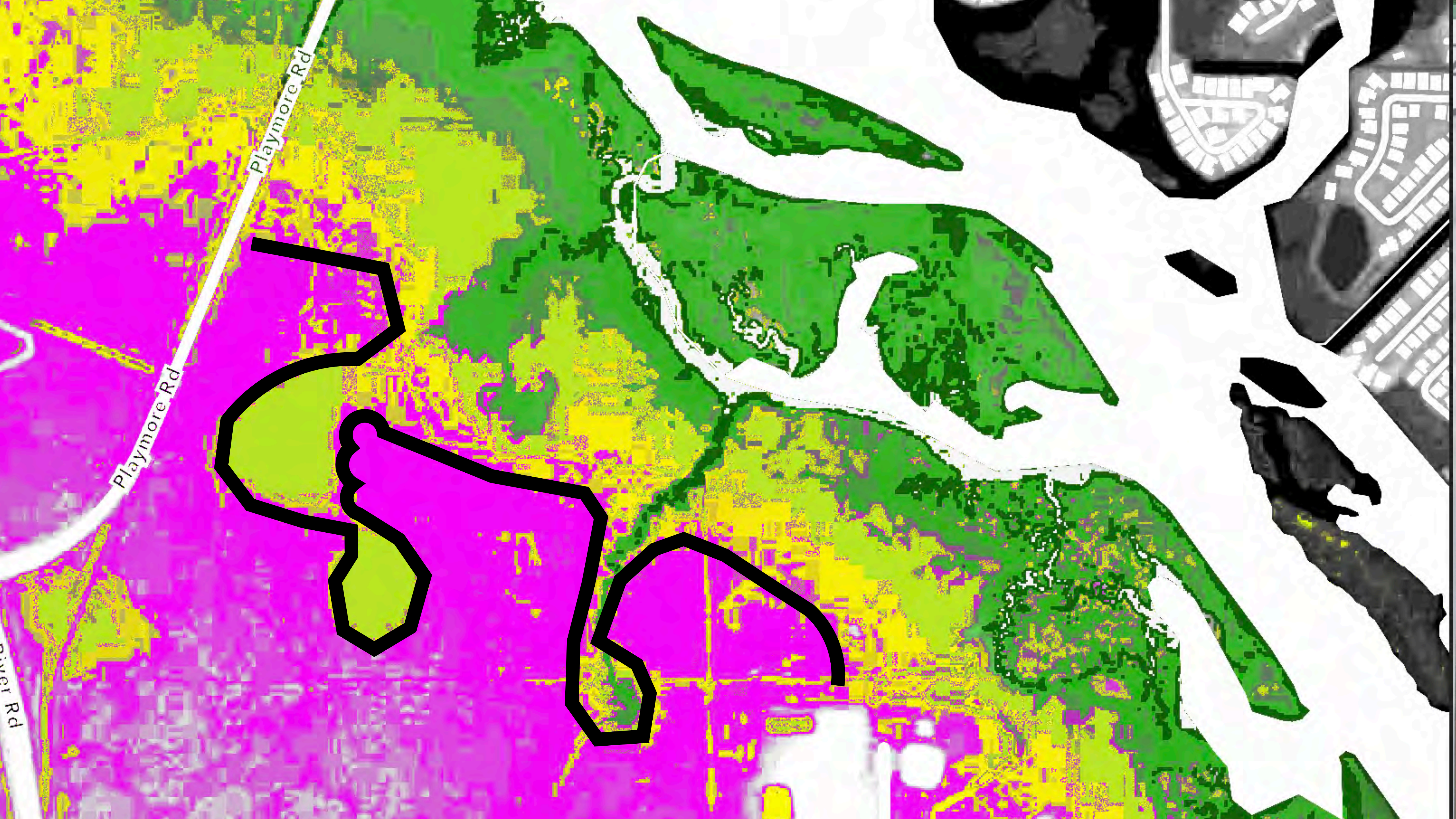
PLAYMORE

SS



B

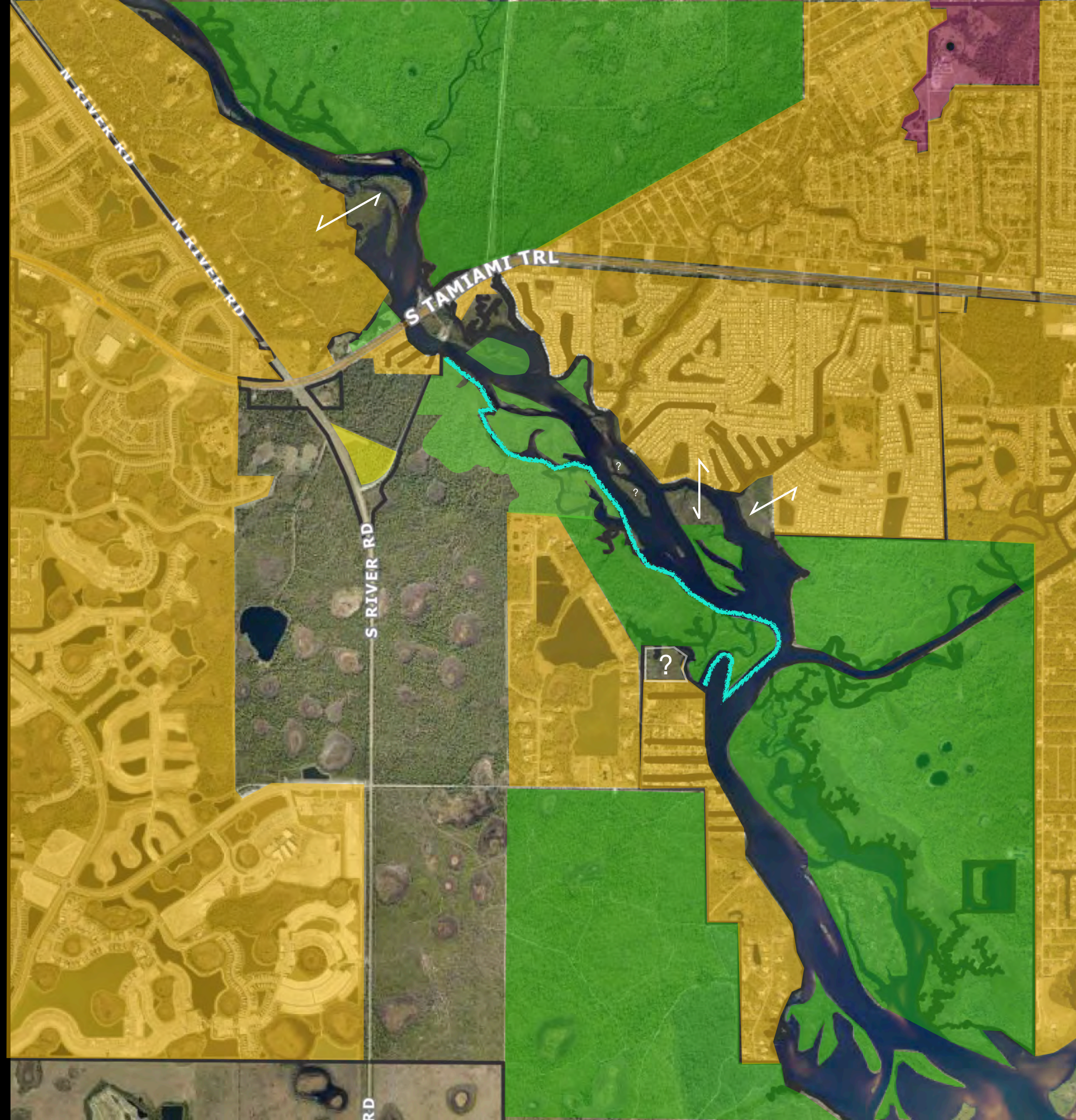
B



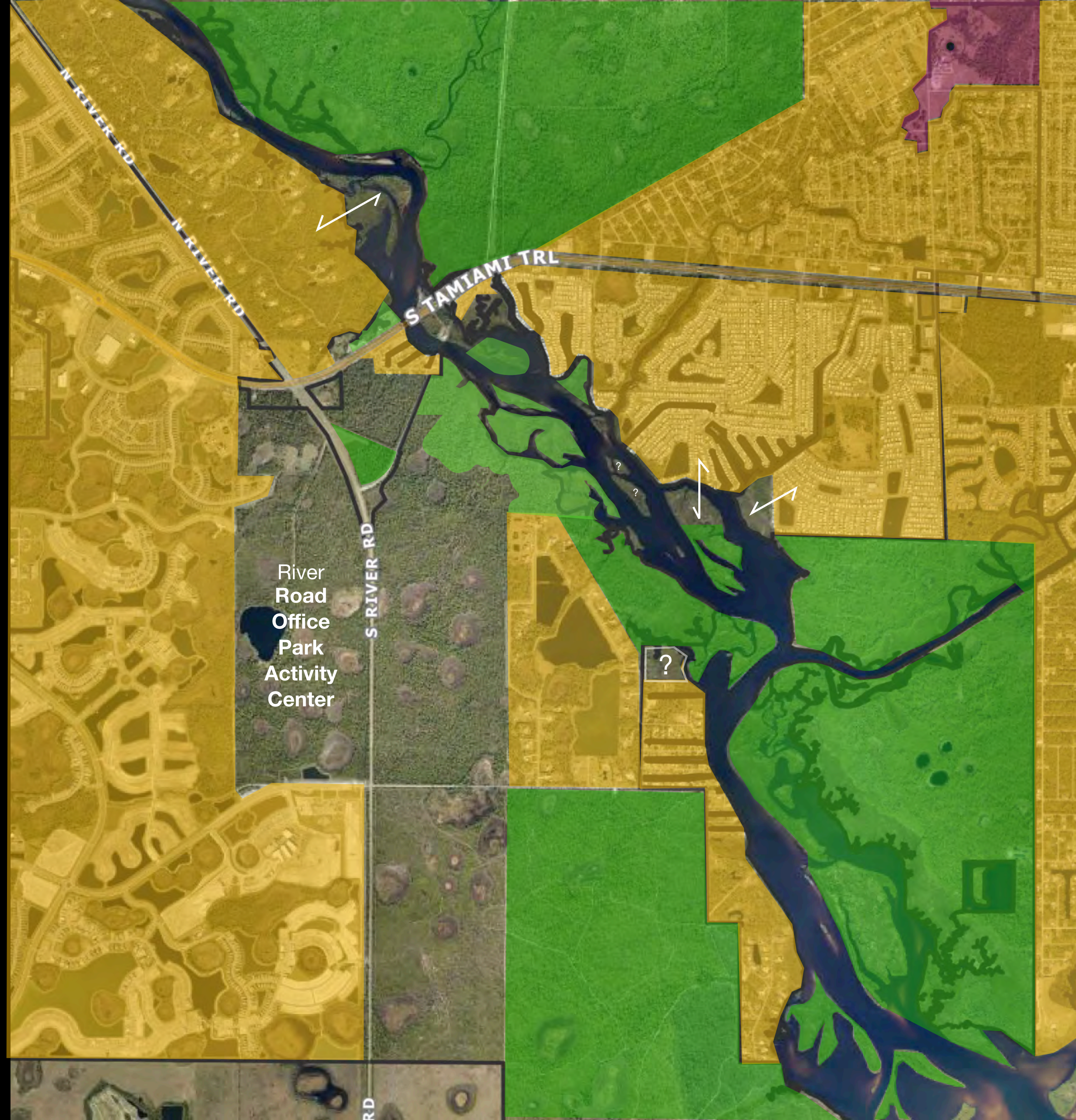
Playmore Rd

Playmore Rd

River Rd



**Two continuous miles
of natural shoreline**



N RIVER RD
N RIVER RD

S TAMiami TRl

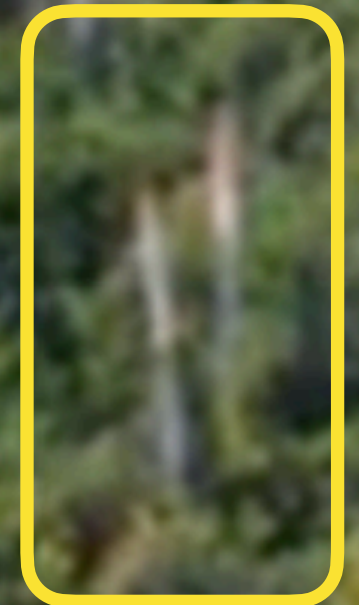
River Road
Office
Park
Activity
Center

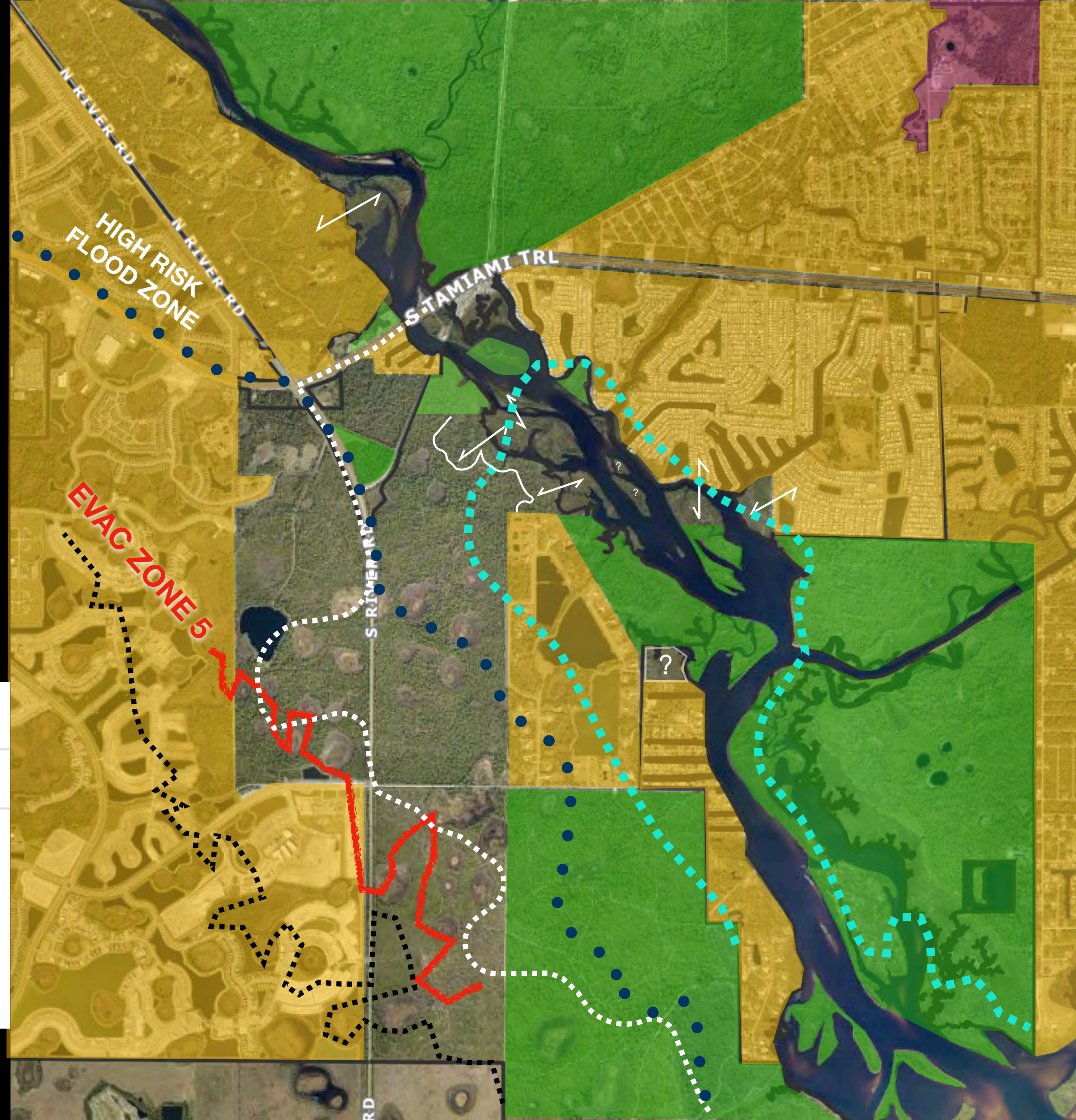
S RIVER RD

?

RD







220' Myakka Protection Zone
 Limit of Moderate Wave Action
 FEMA Zone AE 9'
 FEMA ZONE AE 8'
 Hurricane Evancuation. Zone 5

FEMA Zone: AE

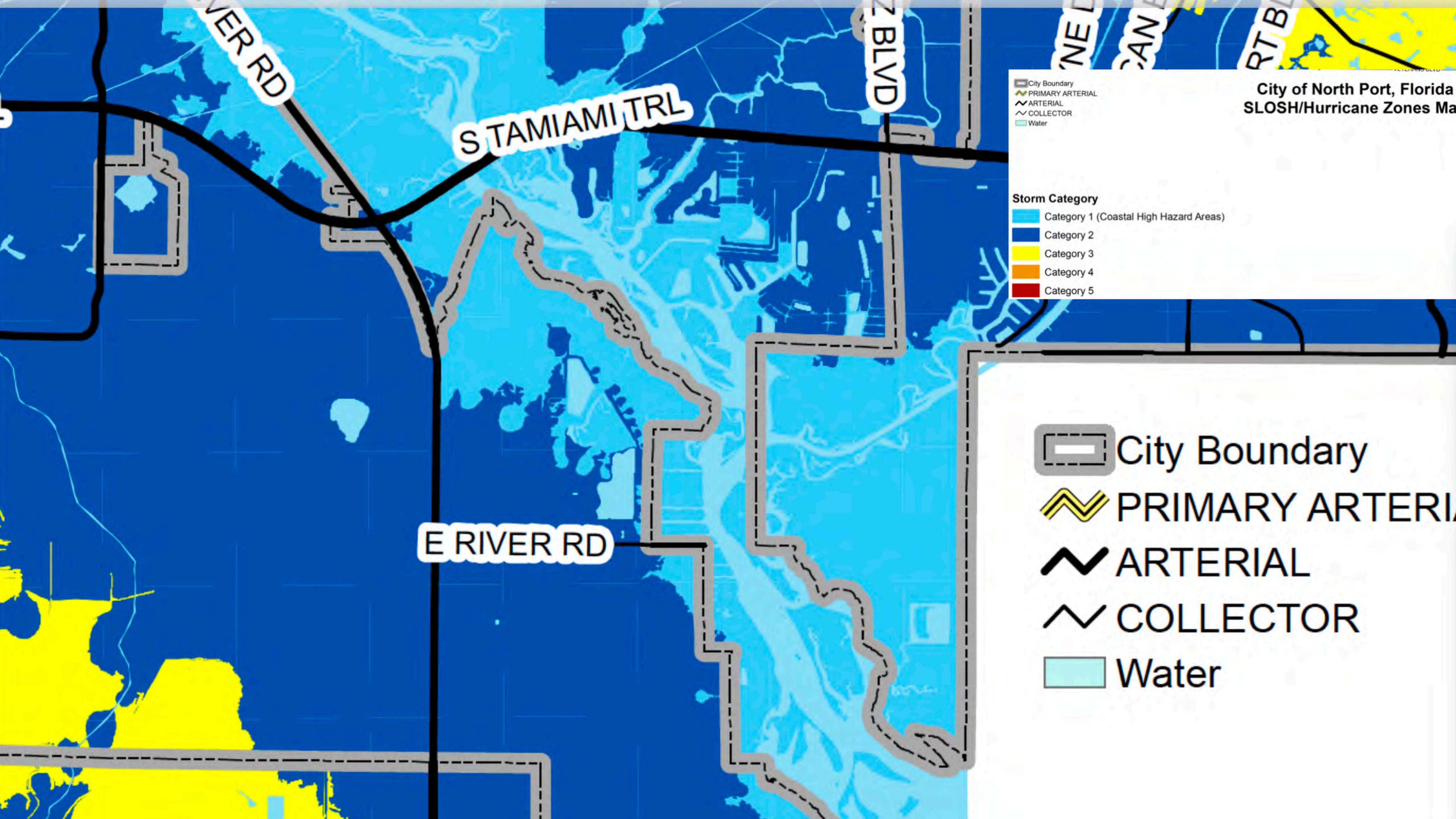
Zoom to

Zone Type: Zone AE
 Effective Date: March 27, 2024
 Is Floodway: No
 Datum: NAVD 88
 Acres: 2,477.37
 Base Flood: 8.00 ft
 Last Update: 5/15/2023

FEMA Zone: AE

Zoom to

Zone Type: Zone AE
 Effective Date: March 27, 2024
 Is Floodway: No
 Datum: NAVD 88
 Acres: 4,907.87
 Base Flood: 9.00 ft
 Last Update: 5/15/2023

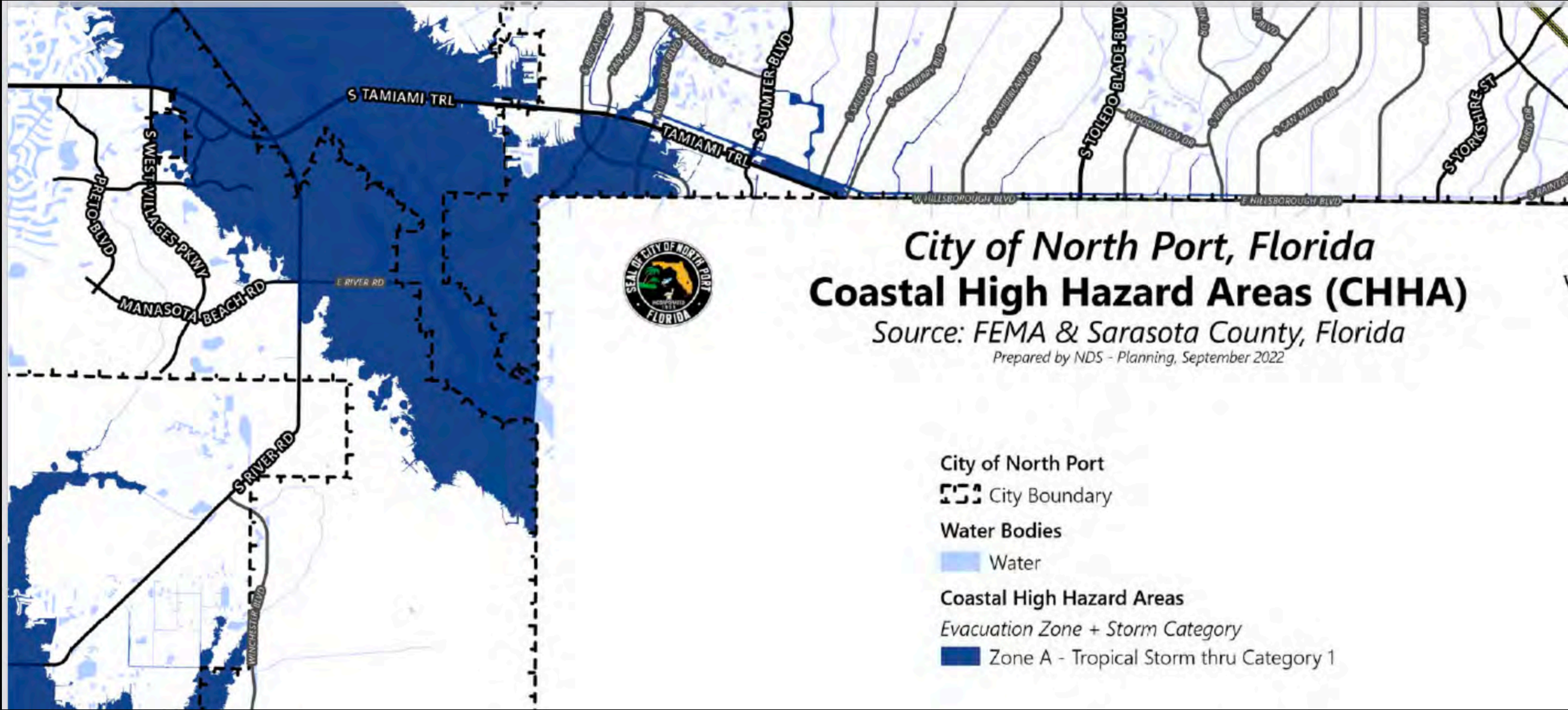


City of North Port, Florida
SLOSH/Hurricane Zones Map

- City Boundary
- PRIMARY ARTERIAL
- ARTERIAL
- COLLECTOR
- Water

- Storm Category**
- Category 1 (Coastal High Hazard Areas)
 - Category 2
 - Category 3
 - Category 4
 - Category 5

- City Boundary
- PRIMARY ARTERIAL
- ARTERIAL
- COLLECTOR
- Water




City of North Port, Florida Coastal High Hazard Areas (CHHA)


Source: FEMA & Sarasota County, Florida

Prepared by NDS - Planning, September 2022

City of North Port


 City Boundary

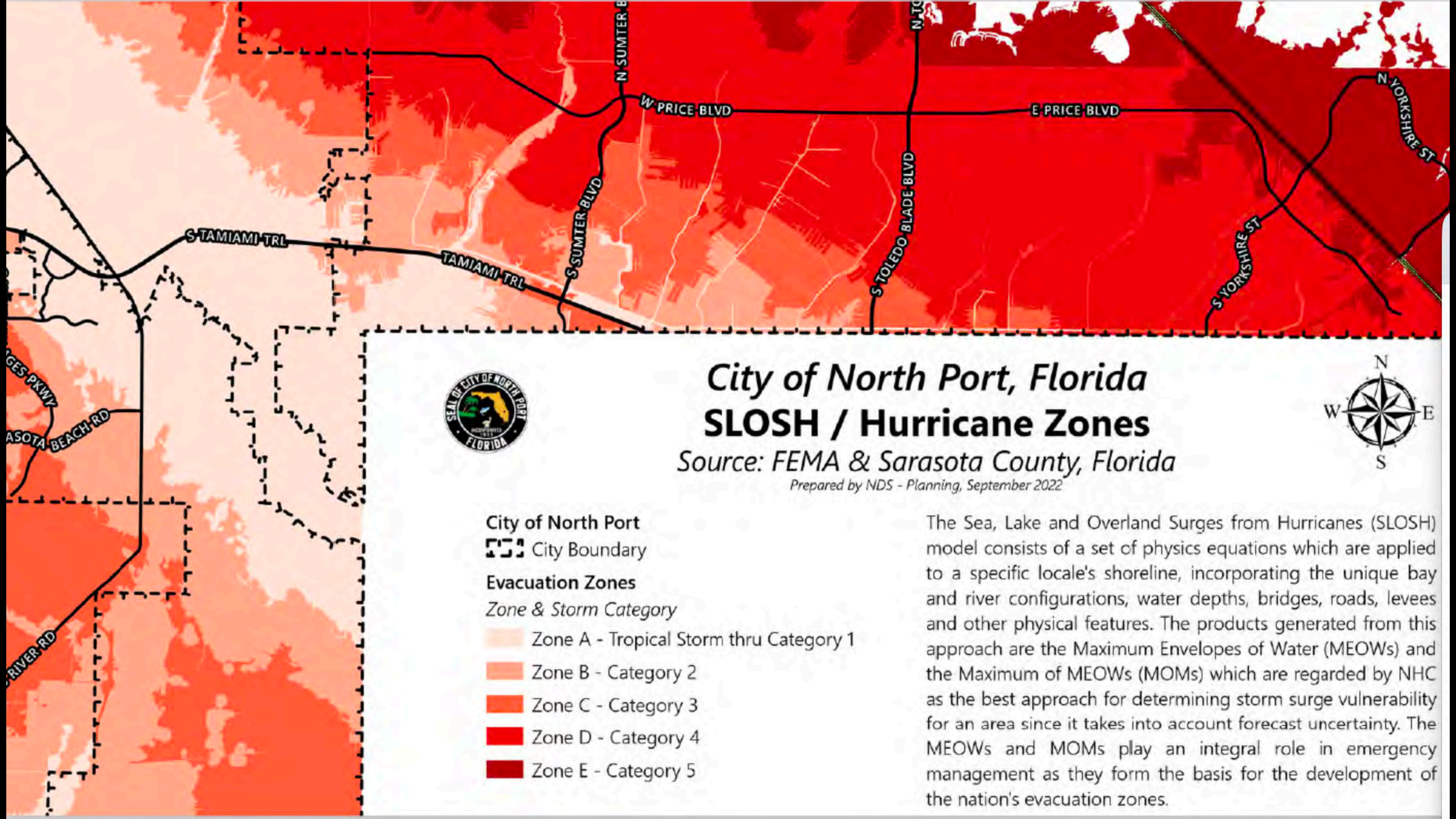
Water Bodies

 Water

Coastal High Hazard Areas

Evacuation Zone + Storm Category

 Zone A - Tropical Storm thru Category 1




City of North Port, Florida SLOSH / Hurricane Zones

Source: FEMA & Sarasota County, Florida

Prepared by NDS - Planning, September 2022








City of North Port

 City Boundary

Evacuation Zones

Zone & Storm Category

-  Zone A - Tropical Storm thru Category 1
-  Zone B - Category 2
-  Zone C - Category 3
-  Zone D - Category 4
-  Zone E - Category 5

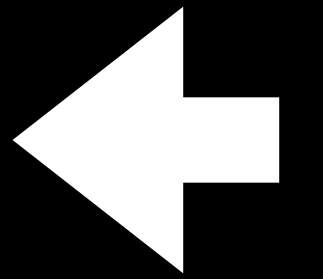
The Sea, Lake and Overland Surges from Hurricanes (SLOSH) model consists of a set of physics equations which are applied to a specific locale's shoreline, incorporating the unique bay and river configurations, water depths, bridges, roads, levees and other physical features. The products generated from this approach are the Maximum Envelopes of Water (MEOWs) and the Maximum of MEOWs (MOMs) which are regarded by NHC as the best approach for determining storm surge vulnerability for an area since it takes into account forecast uncertainty. The MEOWs and MOMs play an integral role in emergency management as they form the basis for the development of the nation's evacuation zones.

COASTAL MANAGEMENT ELEMENT GOALS, OBJECTIVES, & POLICIES

Objective 3: The City shall protect significant natural and cultural (i.e., historic and archeological) resources from the direct and indirect perils of sea level rise, storm surge, and other coastal flood events.

Policy 3.2: The City shall support initiatives such as the acquisition of lots and parcels along creeks, rivers, bays, and harbors that decrease the number of residents and businesses, and their associated impacts, located within the CHHA and/or FEMA Flood Zones "A," "AE," and/or "VE" adjacent to the Myakkahatchee Creek and Myakka River.

Policy 3.3: Consistent with the provisions of the Conservation Element, the City shall abide by its "State - Local Agreement for Administering the Myakka River Wild and Scenic Protection Zone" with the Florida Department of Environmental Protection (FDEP) and shall coordinate with all applicable agencies development proposals of any type that would have an impact upon the shoreline, the Myakka River, or the plant and wildlife that are dependent upon the river.

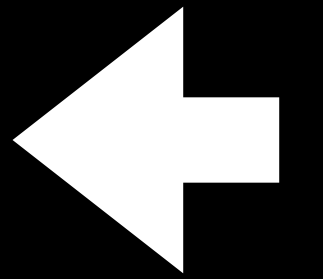


COASTAL MANAGEMENT ELEMENT GOALS, OBJECTIVES, & POLICIES

Objective 3: The City shall protect significant natural and cultural (i.e., historic and archeological) resources from the direct and indirect perils of sea level rise, storm surge, and other coastal flood events.

Policy 3.2: The City shall support initiatives such as the acquisition of lots and parcels along creeks, rivers, bays, and harbors that decrease the number of residents and businesses, and their associated impacts, located within the CHHA and/or FEMA Flood Zones "A," "AE," and/or "VE" adjacent to the Myakkahatchee Creek and Myakka River.

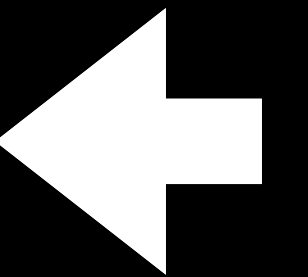
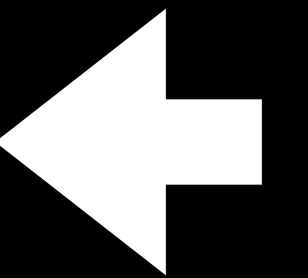
Policy 3.3: Consistent with the provisions of the Conservation Element, the City shall abide by its "State - Local Agreement for Administering the Myakka River Wild and Scenic Protection Zone" with the Florida Department of Environmental Protection (FDEP) and shall coordinate with all applicable agencies development proposals of any type that would have an impact upon the shoreline, the Myakka River, or the plant and wildlife that are dependent upon the river.



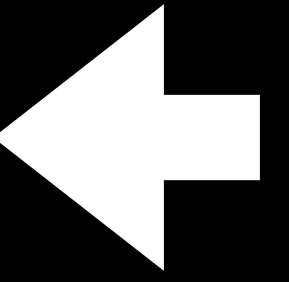
CONSERVATION ELEMENT GOALS, OBJECTIVES, & POLICIES.

5-2Conservation GOPs

Page 5-7 Policy 6.3: In order to preserve and enhance the function of the 100-year floodplain and associated habitats, including wetlands, the City shall utilize the use of Transfer of Development Rights, or other techniques, and appropriate construction methods within the FEMA FIRM 100-year floodplain. Further, prior to the next Evaluation and Appraisal Report (EAR) deadline, the City shall review applicable sections of the City's Unified Land Development Code to determine whether amendments will be necessary to strengthen the City's ability to protect the floodplain, and associated habitats.



Future Land Use Policy 1.7: As the demand for public lands dictates, the City shall establish close coordination through negotiations with property owners for actions including the outright purchase of properties and the use of transfer of development rights as well as other strategies and mechanisms that may be used to bring private lands into public control. This policy shall apply to lands currently indicated on the adopted Future Land Use Map as Public as well as to future properties needed for public use, which will also be redesignated as Public when placed under City or other jurisdictional control. The City shall continue to update, quarterly, its property owner's database based upon the records of the Sarasota County Property Appraiser's Office.condition, as well as o



0795001000
WATER MANAGEMENT
DISTRICT & TIITF SOUTHWEST
FLORID

Zoom to

2025 Values

Just:	Assessed:	Taxable:
\$1,316,100	\$176,892	\$0
Bedrooms: 0	Bath: 0	Year built: 0

Building Gross Area: sqft
Building Living Area: sqft
Land Area: 4,051,080 sqft
Land Use: Parks - Natural A Preserves

2201 S RIVER RD VENICE FL, 34293

[Property Detail Page](#)

[Sarasota County Flood Map](#) Note: This external link to a map maintained by Sarasota County Government, not the Property. For general questions should be directed to Sarasota County at (941) 861-5000



Estimated 50' from
Tidal marsh

2012

2024

Apparent extent
Of clearing/mowing

Falcon Ct

PRMRWSA

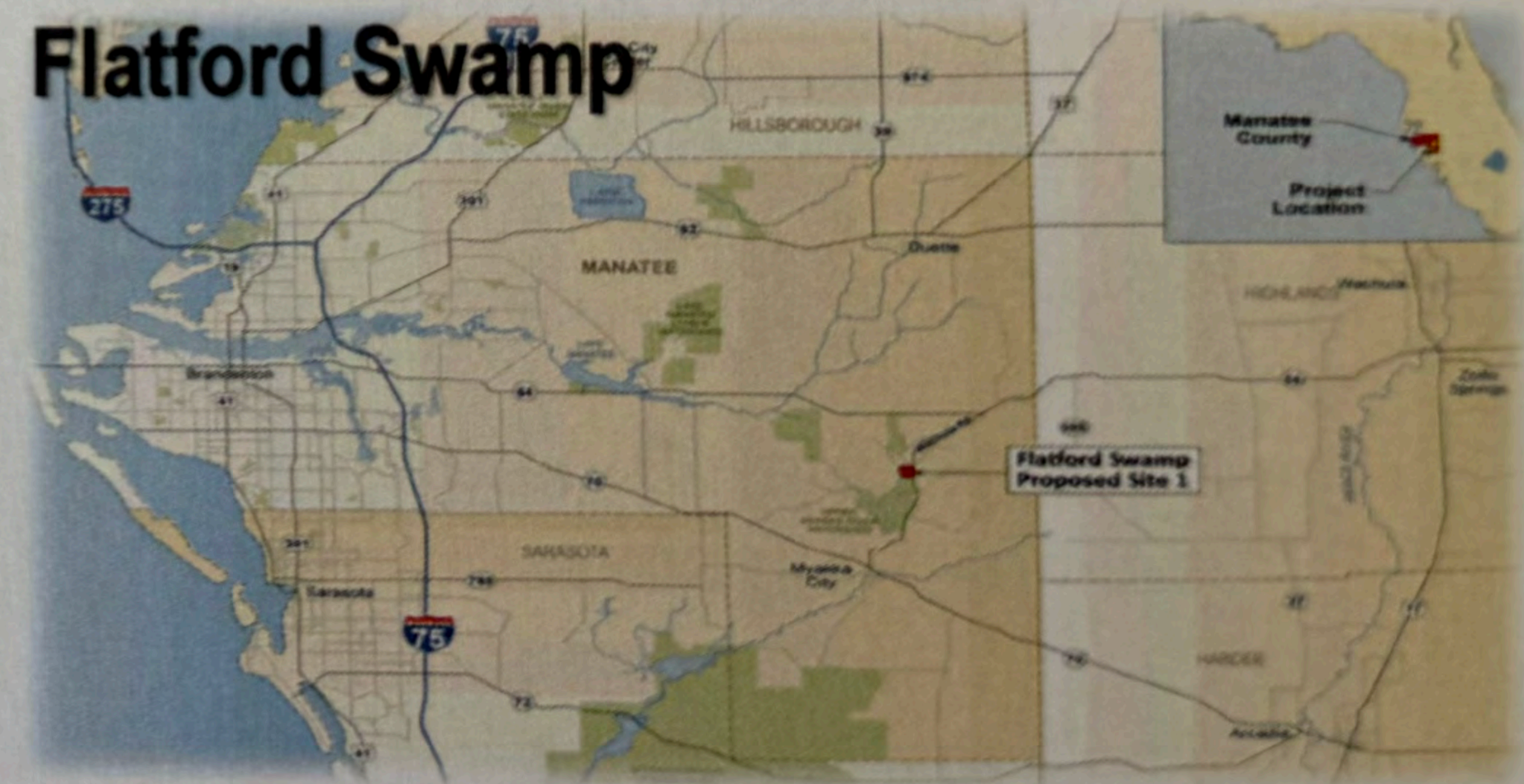


Water Supply Projects

Surface Water Supply Expansion Project

- **PR3** – New 9 Billion Gallon Reservoir; Intake and Pump Station on the Peace River; Reservoir Pump Station and Conveyance System.
- **PRF Expansion** – Plant Capacity increase to support 18 MGD AAD Demands in conjunction with PR3
- **Flatford Swamp** – SWFWMD Project provides opportunity for water supply project(s).
- **Brackish RO WTP*** – New 8 MGD AAD yield brackish groundwater treatment plant on PRF & RVG.

Flatford Swamp

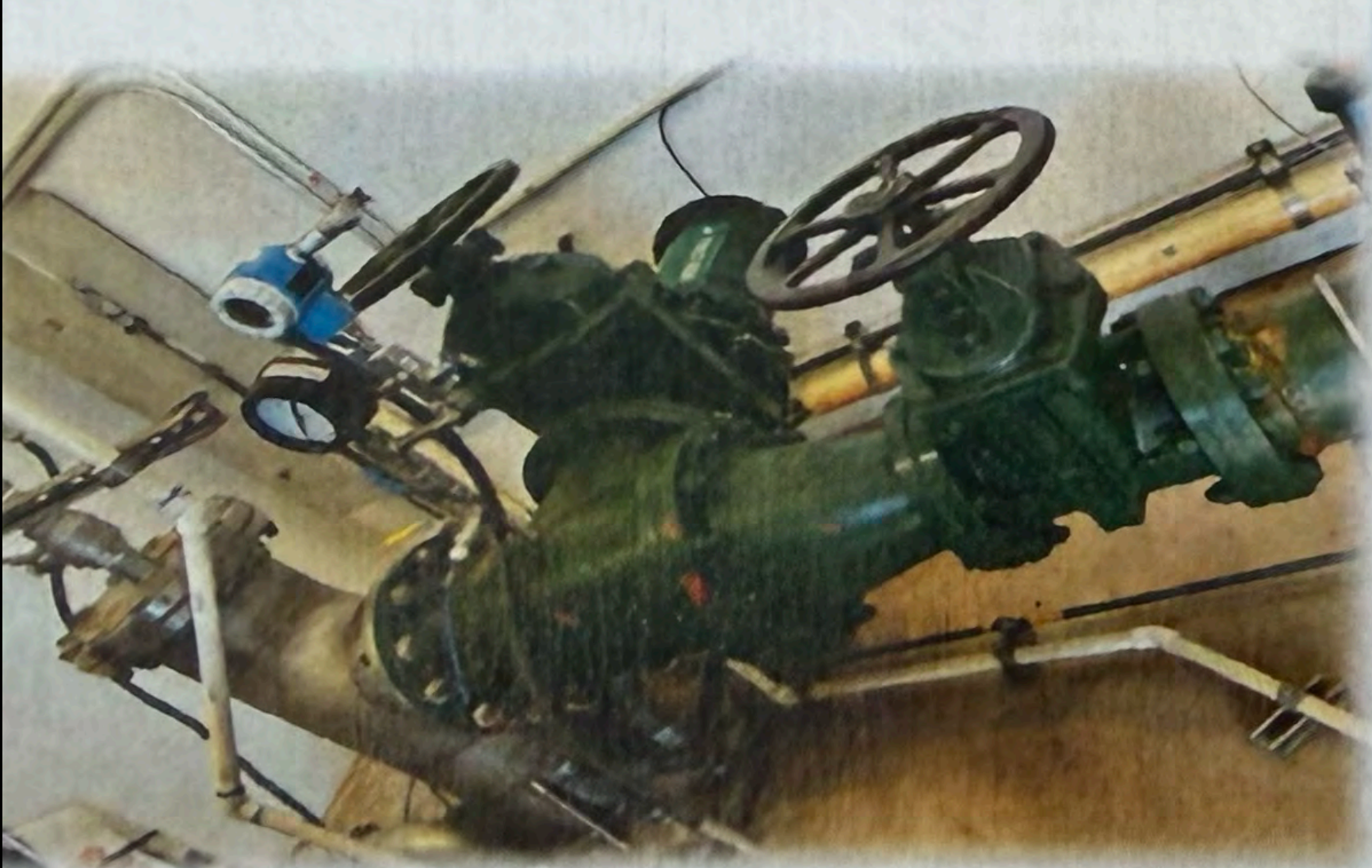


Water Supply Projects

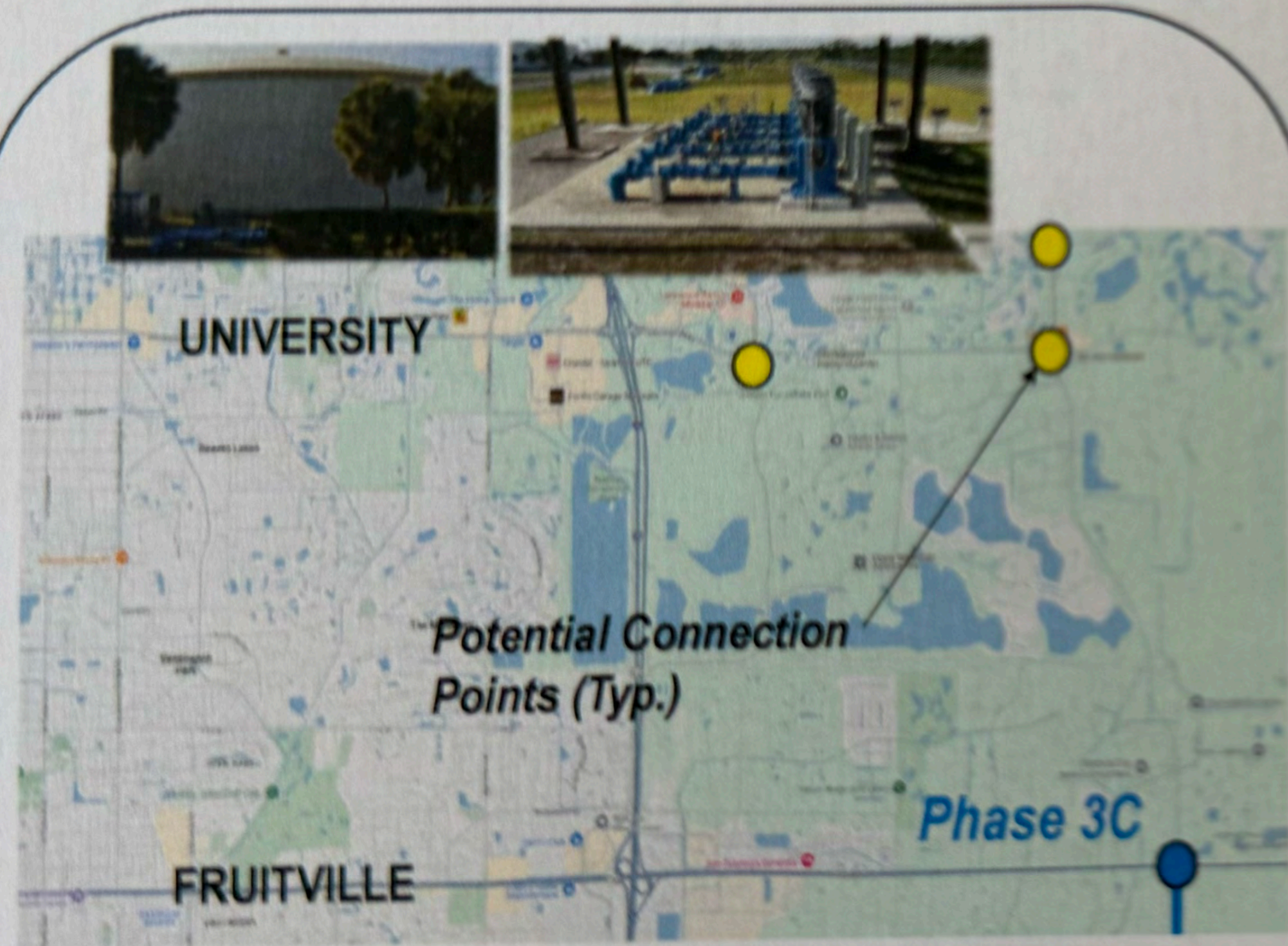
Surface Water Supply Expansion Project

- **PR3** – New 9 Billion Gallon Reservoir; Intake and Pump Station on the Peace River; Reservoir Pump Station and Conveyance System.
- **PRF Expansion** – Plant Capacity increase to support 18 MGD AAD Demands in conjunction with PR3
- **Flatford Swamp** – SWFWMD Project provides opportunity for water supply project(s).
- **Brackish RO WTP** – New 8 MGD AAD yield brackish groundwater treatment plant on PRF & RVG.

Flatford Swamp



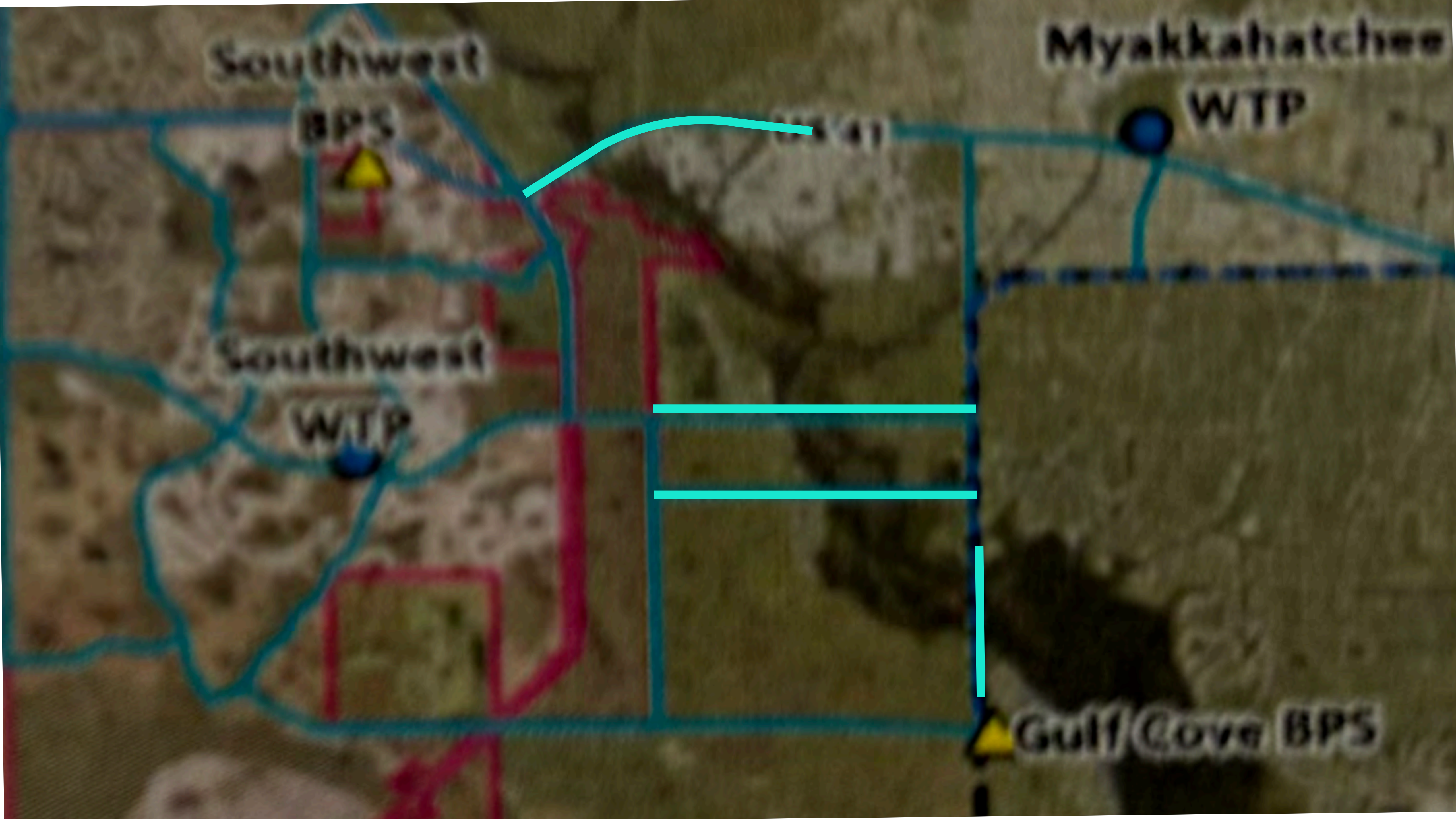
4 Transmission System Projects (3&4 of 4)



Phase 3C Extension Pipeline
36"/42" diameter transmission main to connect to Manatee County.
Feasibility Study & Routing



Phase 2C Pipeline
36"/42" diameter transmission main to Venice Gardens WTP (Sarasota County)
Feasibility Study & Routing



Myakka Land Protection



Willow Creek Cir

Willow Creek Cir

Willow Creek Cir

Willow Creek Cir

TAMIAI TR L

TAMIAI TR

TAMIAI TR

TAMIAI TR

Rocky Ford, Nokomis

- Adjacent to Myakka Rivers Trust and across from Carlton Reserve
- No structures and utilities present
- Zoned OUE (*Open Use Estate 1 unit/5 acres*)
- Future Land Use Designation: Public Conservation/Preservation and Rural
- Outside the Urban Service Area
- FEMA Flood Zone A (*river floodplain*)



Rocky Ford, Nokomis

- 3,000 linear feet of river frontage
- Features an historical oxbow and tributary from Cowpen Slough
- Mesic hammock habitat with oaks and cabbage palm
- Accessible from Myakka River or by foot trails via Myakka River Trust and Pinelands Reserve



897 Brentwood Drive

Jono Miller April 3, 2026